



4-310 Hinge Pr04 180°



Lift-off, for surface mounted door

Advantages

- Weld-on Hinge.
- Door is lift-off.
- 180° Opening angle.

Materials

- **Hinge parts:** steel, untreated
- **Pin:** steel or brass
- **Washer:** brass



Hinge, version A

Part Number	Length	Dimension S	Ø Knurl D	Material pin	Pin version	Ø Pin d	Installation type
223-9001.00-00000	40,0 mm	10,0 mm	8,0 mm	steel, zinc plated	fixed	5,0 mm	weld-on
223-9002.00-00000	50,0 mm	10,0 mm	8,0 mm	steel, zinc plated	fixed	5,0 mm	weld-on
223-9003.00-00000	60,0 mm	12,0 mm	10,0 mm	steel, zinc plated	fixed	6,0 mm	weld-on
223-9004.00-00000	70,0 mm	12,0 mm	10,0 mm	steel, zinc plated	fixed	6,0 mm	weld-on
223-9005.00-00000	80,0 mm	16,0 mm	13,0 mm	steel, zinc plated	fixed	8,0 mm	weld-on
223-9006.00-00000	90,0 mm	16,0 mm	13,0 mm	steel, zinc plated	fixed	8,0 mm	weld-on
223-9007.00-00000	100,0 mm	20,0 mm	16,0 mm	steel, zinc plated	fixed	10,0 mm	weld-on
223-9008.00-00000	120,0 mm	20,0 mm	16,0 mm	steel, zinc plated	fixed	10,0 mm	weld-on

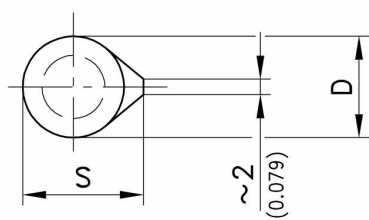
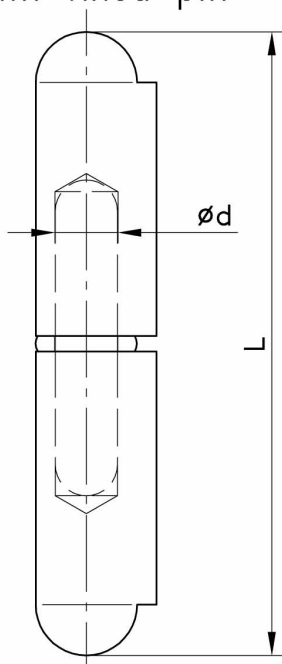
223-9009.00-00000	135,0 mm	22,5 mm	18,0 mm	steel, zinc plated	fixed	12,0 mm	weld-on
223-9010.00-00000	150,0 mm	25,5 mm	20,0 mm	steel, zinc plated	fixed	13,0 mm	weld-on
223-9011.00-00000	180,0 mm	25,5 mm	20,0 mm	steel, zinc plated	fixed	13,0 mm	weld-on
223-9012.00-00000	200,0 mm	29,0 mm	23,0 mm	steel, zinc plated	fixed	16,0 mm	weld-on
223-9101.00-00000	40,0 mm	10,0 mm	8,0 mm	brass	fixed	5,0 mm	weld-on
223-9102.00-00000	50,0 mm	10,0 mm	8,0 mm	brass	fixed	5,0 mm	weld-on
223-9103.00-00000	60,0 mm	12,0 mm	10,0 mm	brass	fixed	6,0 mm	weld-on
223-9104.00-00000	70,0 mm	12,0 mm	10,0 mm	brass	fixed	6,0 mm	weld-on
223-9105.00-00000	80,0 mm	16,0 mm	13,0 mm	brass	fixed	8,0 mm	weld-on
223-9106.00-00000	90,0 mm	16,0 mm	13,0 mm	brass	fixed	8,0 mm	weld-on
223-9107.00-00000	100,0 mm	20,0 mm	16,0 mm	brass	fixed	10,0 mm	weld-on
223-9108.00-00000	120,0 mm	20,0 mm	16,0 mm	brass	fixed	10,0 mm	weld-on
223-9109.00-00000	135,0 mm	22,5 mm	18,0 mm	brass	fixed	12,0 mm	weld-on
223-9110.00-00000	150,0 mm	25,5 mm	20,0 mm	brass	fixed	13,0 mm	weld-on
223-9111.00-00000	180,0 mm	25,5 mm	20,0 mm	brass	fixed	13,0 mm	weld-on
223-9112.00-00000	200,0 mm	29,0 mm	23,0 mm	brass	fixed	16,0 mm	weld-on

Hinge, version B

Part Number	Pin version	Length	Material pin	Dimension S	Installation type	Ø Knurl D	Ø Pin d
223-9201.00-00000	loose	40,0 mm	steel, zinc plated	10,0 mm	weld-on	8,0 mm	5,0 mm
223-9202.00-00000	loose	50,0 mm	steel, zinc plated	10,0 mm	weld-on	8,0 mm	5,0 mm
223-9203.00-00000	loose	60,0 mm	steel, zinc plated	12,0 mm	weld-on	10,0 mm	6,0 mm
223-9204.00-00000	loose	70,0 mm	steel, zinc plated	12,0 mm	weld-on	10,0 mm	6,0 mm
223-9205.00-00000	loose	80,0 mm	steel, zinc plated	16,0 mm	weld-on	13,0 mm	8,0 mm
223-9206.00-00000	loose	90,0 mm	steel, zinc plated	16,0 mm	weld-on	13,0 mm	8,0 mm
223-9207.00-00000	loose	100,0 mm	steel, zinc plated	20,0 mm	weld-on	16,0 mm	10,0 mm
223-9208.00-00000	loose	120,0 mm	steel, zinc plated	20,0 mm	weld-on	16,0 mm	10,0 mm

223-9209.00-00000	loose	135,0 mm	steel, zinc plated	22,5 mm	weld-on	18,0 mm	12,0 mm
223-9210.00-00000	loose	150,0 mm	steel, zinc plated	25,5 mm	weld-on	20,0 mm	13,0 mm
223-9211.00-00000	loose	180,0 mm	steel, zinc plated	25,5 mm	weld-on	20,0 mm	13,0 mm
223-9212.00-00000	loose	200,0 mm	steel, zinc plated	29,0 mm	weld-on	23,0 mm	16,0 mm
223-9301.00-00000	loose	40,0 mm	brass	10,0 mm	weld-on	8,0 mm	5,0 mm
223-9302.00-00000	loose	50,0 mm	brass	10,0 mm	weld-on	8,0 mm	5,0 mm
223-9303.00-00000	loose	60,0 mm	brass	12,0 mm	weld-on	10,0 mm	6,0 mm
223-9304.00-00000	loose	70,0 mm	brass	12,0 mm	weld-on	10,0 mm	6,0 mm
223-9305.00-00000	loose	80,0 mm	brass	16,0 mm	weld-on	13,0 mm	8,0 mm
223-9307.00-00000	loose	100,0 mm	brass	20,0 mm	weld-on	16,0 mm	10,0 mm
223-9308.00-00000	loose	120,0 mm	brass	20,0 mm	weld-on	16,0 mm	10,0 mm
223-9309.00-00000	loose	135,0 mm	brass	22,5 mm	weld-on	18,0 mm	12,0 mm
223-9310.00-00000	loose	150,0 mm	brass	25,5 mm	weld-on	20,0 mm	13,0 mm

Version A
with fixed pin



Version B
with loose pin

